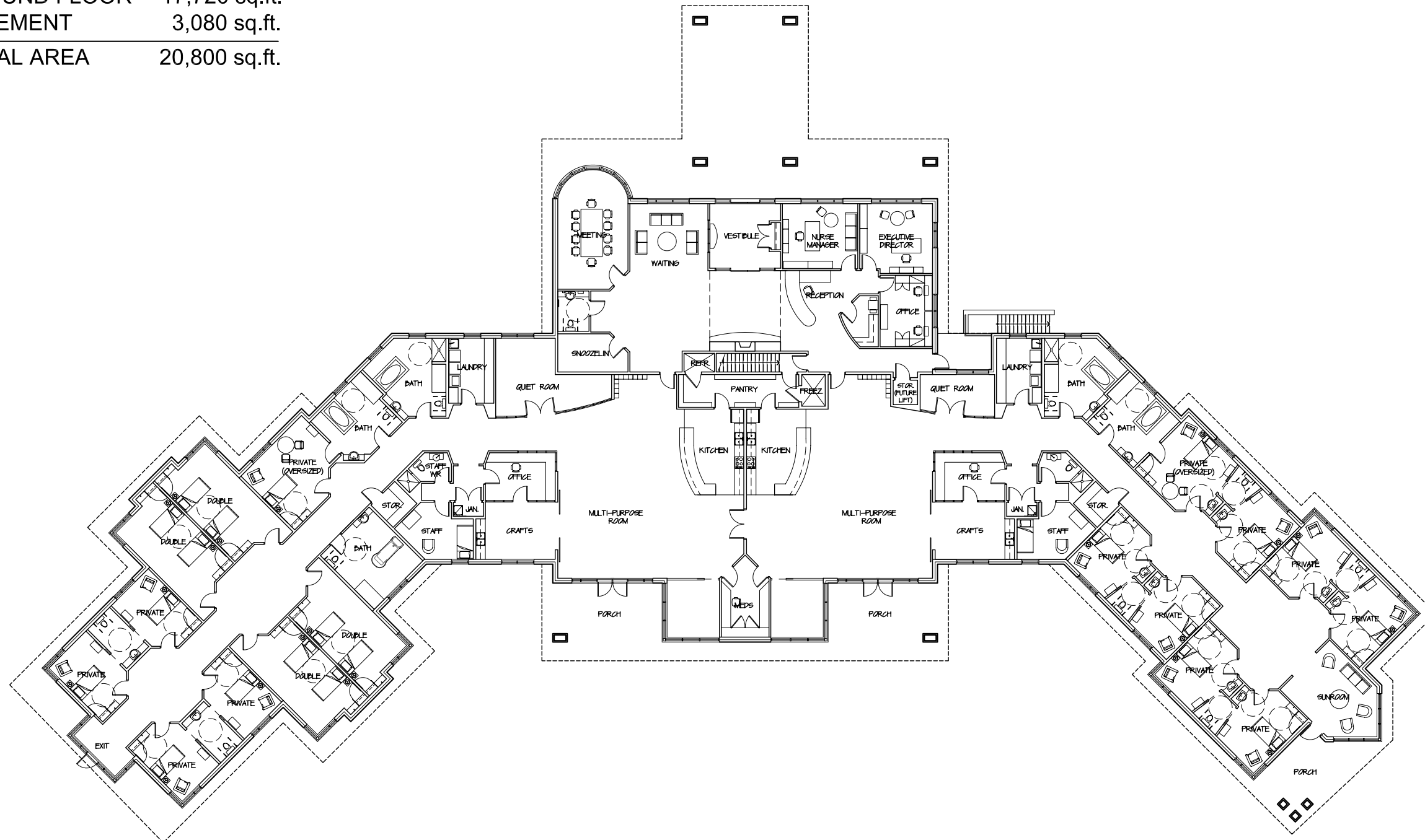


GROUND FLOOR 17,720 sq.ft.
 BASEMENT 3,080 sq.ft.
 TOTAL AREA 20,800 sq.ft.



ROTARY HOME - RESPITE HOME CARE

CONCEPT GROUND FLOOR PLAN

27 September, 2007

SCALE: 1:300
 JOB # 0203-1

